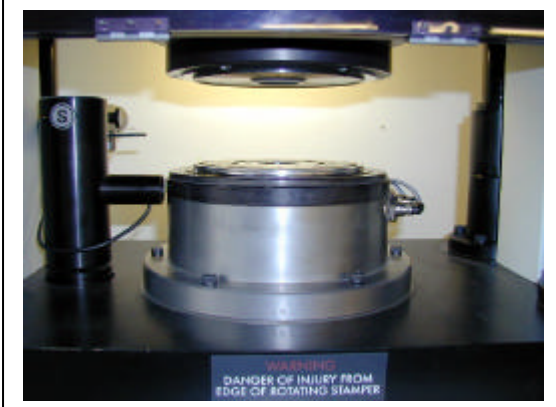
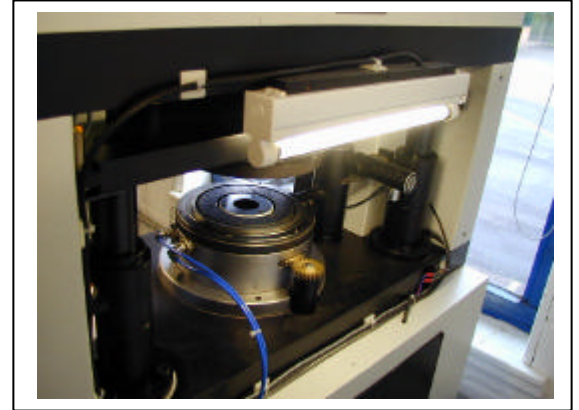


## PUNCH AND DIE SET REMOVAL 1



1. Punch and die set ready to be removed.



2. Remove back cover of Comp150 as shown above.



3. Fit protective rubber mat on bottom set of punch and die as shown above.



4. On left hand side panel turn key to manual setting and lower top half of set onto the rubber mat.

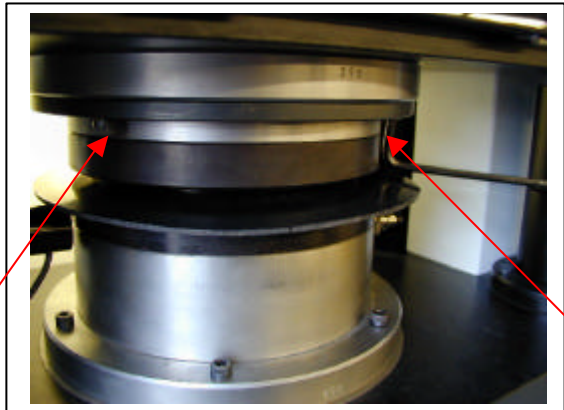


Tel: +44 (0) 1483 301622  
Fax: +44 (0) 1483 302699  
Email: Sales@Sibert.co.uk

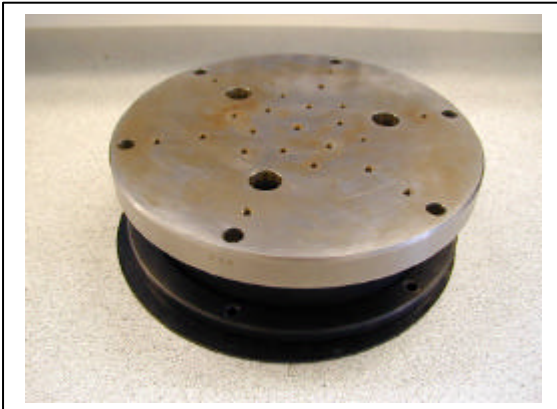
# PUNCH AND DIE SET REMOVAL 2



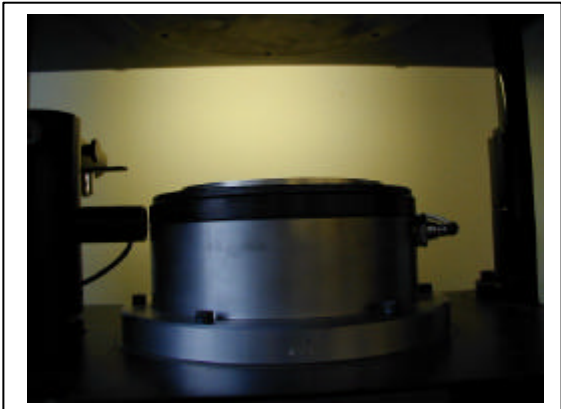
5. Manual setting on control panel.



6. Photo showing upper punch lowered onto rubber mat in manual mode. Remove 6 off cap head screws around top punch as shown by the arrows above.



7. In manual mode carefully lift up top plate to separate top punch. Carefully remove top punch from machine, as shown above.

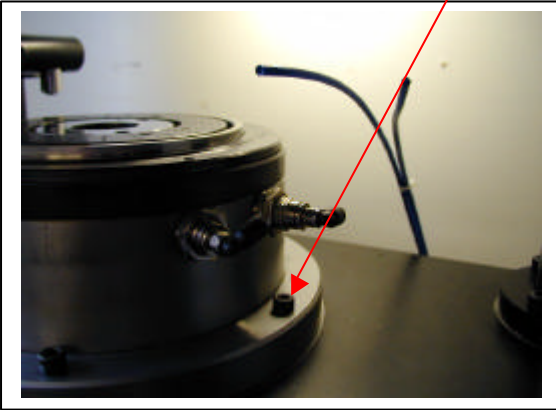


8. Photo showing top punch removed and top plate raised up out of the way.



Tel: +44 (0) 1483 301622  
Fax: +44 (0) 1483 302699  
Email: Sales@Sibert.co.uk

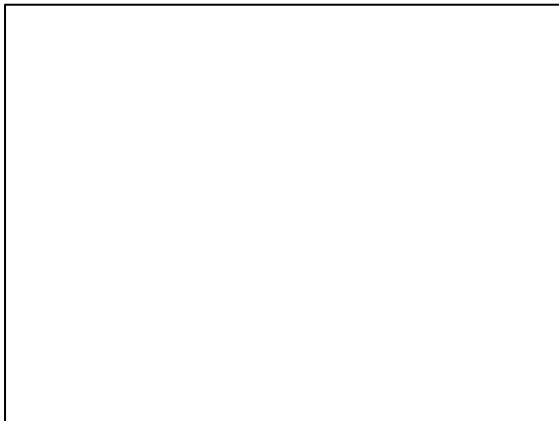
### PUNCH AND DIE SET REMOVAL 3



9. Remove two air pipes from the bottom die set as shown. Remove 6 cap head screws shown by arrow and carefully remove bottom die set.



10. Bottom die set removed from machine.



Tel: +44 (0) 1483 301622  
Fax: +44 (0) 1483 302699  
Email: Sales@Sibert.co.uk